

TECH RIDER

- THIRST - Full Version

COMPAGNIE D'AUTRES CORDES
Franck VIGROUX / Kurt d'HAESELEER

These are the minimum technical requirements to ensure a great sound and performance. If you have a problem meeting any of our technical requirement feel free to contact us immediately to discuss.

This is a multiple screen concert, it means in some large hall sight could be altered for side seats.

SOUND SYSTEM

We need a full range stereo sound system capable of 110 dB constant at mix position without distortion and fully covering the audience area. It should include minimum **4x 18"** driver for low frequency . The system loudspeakers must be configured as a Left/Right stereo pair; center clusters, balcony fills etc. are fine providing they are an addition to the main L&R speakers - any such additions should be independently controllable from the mix position...

The control room with the sound board and our video set up will be placed in the middle of the venue. The promoter allows the production crew to determine the location of their equipment.

Sound system should be in place and functional at the time of the band equipment load out. We will need a qualified sound engineer and a specialist in AV before and during the show.

SOUND & VIDEO CHECKING

Sound and video check time should be **4hrs** before doors open. Average **sound check time is 1 hour and video check 3 hours.**

TECHNICAL REQUIREMENTS

Stage

- **1 stage platforms** without black facing : 2 meters (6,56ft) x 1 meter (3,28ft) height: 1 meter (3,28 ft). In some cases, we can request a black facing if the stage platform is too bright.
- **2x 6 outputs** powerstrips on the stage platform (UE plugs)
- **1x 6 outputs** powerstrip on FOH (UE plugs)
- **1 gooseneck** lamp for the musician desk

Sound – All the sound setup need to be operational at the time of the band equipment load out -

- **2 XLR line** on stage for the musician's mixer output
- **1 XLR line** between musician's midi output and the video computer in FOH (we provide DIN 5 pin to XLR adaptors and the MIDI (Din 5pin) to USB cable). This connection will be only an analog one (analog snake or direct XLR line only).

Minimum PA system :

- **4x 18" subwoofer** (like 4xL-Acoustic SB18 or 2x L-Acoustic SB218, D&B V-SUB, Meyer sound 700 HP)
- **4x 15" (or 12") speakers** (like L-Acoustics Arcs, D&B MAX2, Meyer sound UPQ-1P)

Monitors (Please ensure that the monitors are in stereo) :

- **2x15" monitors** on 2 different mixes (L&R)
- **2x 18" sub** on stage as monitors (L&R)

Video – All the video setup need to be operational at the time of the band equipment load out -

- We provide the 12x6,75m (39,37ft x 22,14ft) net screen.
- **A 5x9m (16,4ft x 29,52ft) translucent anthracite** (suitable for retro projection) **screen**. In some cases, we may be able to provide this screen.
- **1 video projector 20K lumens ANSI minimum**. Resolution minimum 1080p60hz. The lens ratio will be in accordance to fit with our net screen (12m x 6,75m) in stage's front. (Stage plot below)
- **1 video projector 5,5K lumens ANSI minimum with a wide angle lens**. Resolution minimum 1080p60hz. The lens ratio will be in accordance to fit with our anthracite screen (min 9x5m). (Stage plot below)

- **2 separate video connection certified 3G SDI with HDMI converters** (*like : Blackmagic micro Converter BiDirect SDI/HDMI 3G*) between our video laptop in FOH and the two video projectors.

- **2mx2m LED screen Pitch 4,8** composed by 16 50cmx50cm modules of 104x104px and his rigging system. (Stage plot below). The **distance between the led screen and the black screen** must be between **5cm** (0,16 ft) and **9cm** (0,29 ft)

- **LED screen controller with HDMI input** (*like Novastar MCTRL600*) compatible with the LED screen. *It will be placed in the FOH next to the video laptop.*

Please contact us if you have any questions.

The list of equipment must be validated before the show by our team.

Light :

- Depending of the venue we must need a **1 1kw tungsten profile** (or LED equivalent) with one Lee 711 gel.

This profile will make Frank's top light, at 8m, we need 30° aperture.

We need a dimmable channel which will be controlled in the control room at hands of the computer/video technical staff.

Input	Instrument	Mic/DI
1	Out Left Franck Vigroux	XLR
2	Out Right Franck Vigroux	XLR

CATERING

Hotel 4 stars, two single rooms with breakfast.

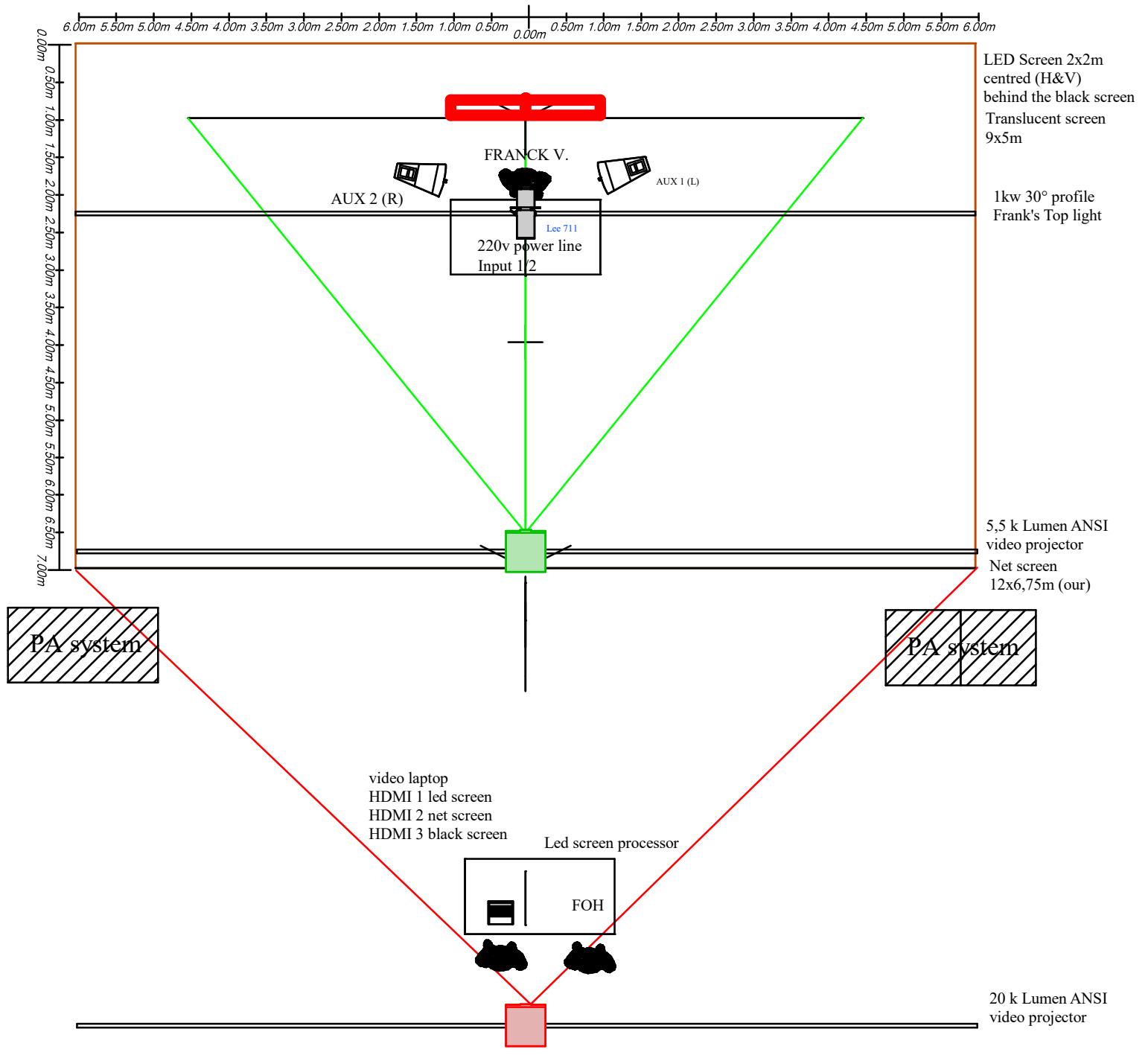
2 hot meals, organic fresh fruits, vegetarian food, mineral water, espresso

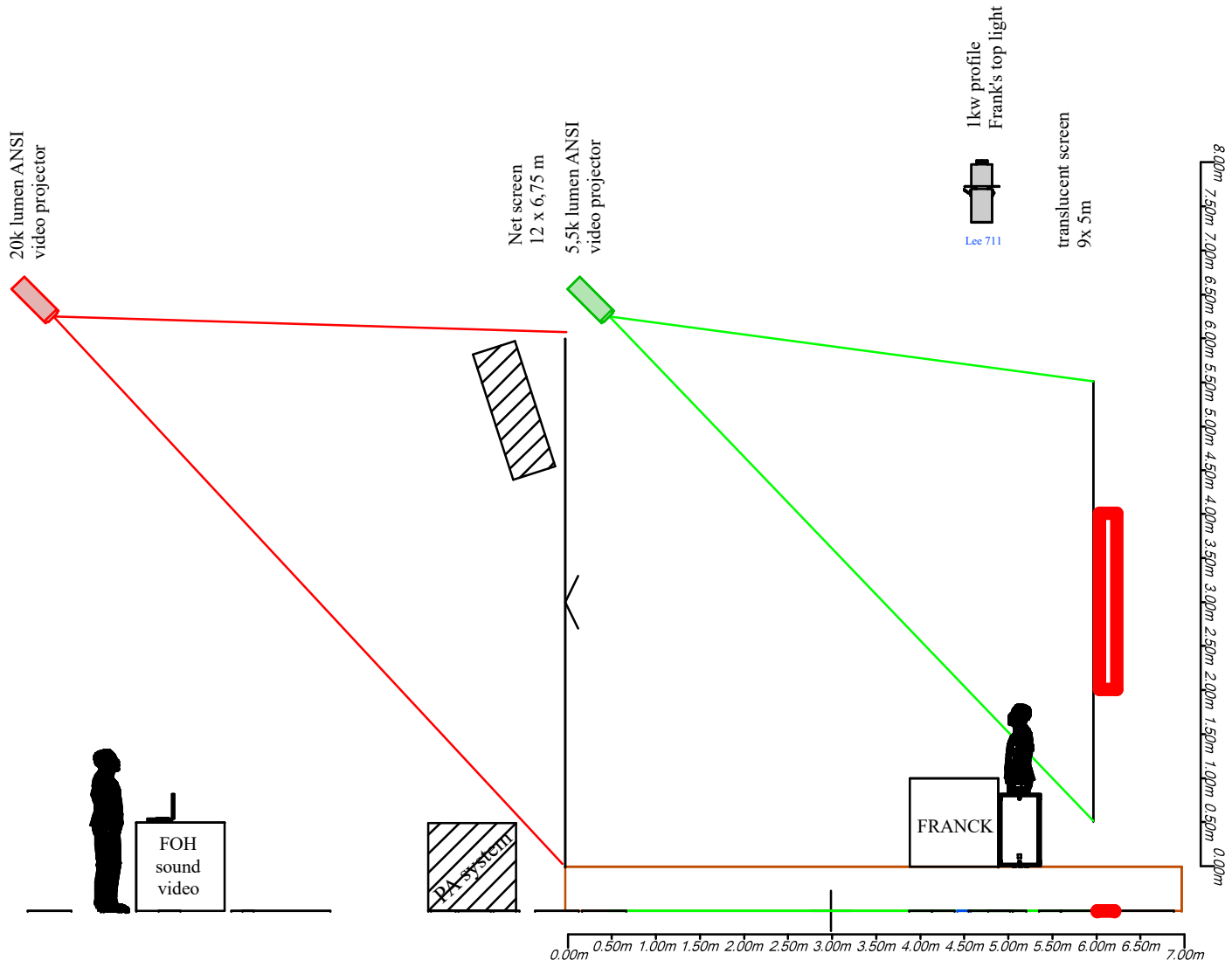
CONTACTS

Franck VIGROUX - Musician- : +33(0)6 81 40 20 90 compagniedautrescordes@gmail.com

Kurt d'HAESELEER - Video Artist - : kurtdhaes@gmail.com

Joseph COURANT - Technician - : +33(0)7 86 79 57 23 courant.joseph@gmail.com







<https://vimeo.com/917448452>