

Cie D'Autres Cordes  
- HUNGER -

Provisional Tech Rider

-End of creation November 26 -

The show is still in creation, this current tech rider can change. We will keep you in touch about potential modifications.

This tech rider is an integral part of the contract and must be complied with in its entirety.  
If you encounter any difficulties in meeting the requirements below, please contact us and we will work together to find a solution!

**CONTACTS :**

Stage manager : Courant Joseph – +33(0)7.86.79.57.23 – [courant.joseph@gmail.com](mailto:courant.joseph@gmail.com)

Production / administration : Bouchet Jérôme – +33(0)6.49.24.92.17 – [compagniedautrescordes@gmail.com](mailto:compagniedautrescordes@gmail.com)

**SHOW DURATION :** 40 min ( in creation, target time 50/60 min)

**CREW ON TOUR :**

5 persons (number can change)

Live Musician : Franck Vigroux

Dancer : François Malbranque

Choreographer : Amandine Bajou (TBC)

Stage Manager / Video / light / stage : Joseph Courant

Sound / Stage / production : Jérôme Bouchet

**ACCOMMODATION :**

5 single room with breakfast. Number of night and persons can change, we will keep you informed.

**DIETS :**

We prefer season and local food.

We have several vegetarians in the crew ( no meat, no fish, no cheese). The number can change we will keep you informed. But, the other part of the crew can eat everything ;)

## **STAGE and FX:**

We need a minimum stage's size of **12 m** wide, **8m** depth, **8m** height.

We play without **any borders or legs**. We will keep a great care to the backstages. They must be as clear as possible. Backstage must be free and clean, we will only keep the necessary equipment behind the scenes. Thanks to hide all the visible lights which can be saw by the audience.

Thanks to provide : **White dance floor 9m wide by 8m depth.**

We provide : Black Molton Floor 9m wide by 8m depth.

In the show, we remove the black molton with a kabuki and a pulley system. For this effect, we need a **clear zone 1mx1m upstage right with 8m high clearance** under a strong rig point.

In some cases, if the drop height is to low, we need something to absorb the lest drop ( foam, old legs, couch pillow...)

Thanks to provide : 40kg cast iron lest ( or sand) **with a strong handle.**

We provide : Ropes, pulleys, kabuki

We use **heavy smoke machine** during the show, **please deactivate optical smoke detectors.**

Please deactivate any ventilation, pulsed air heater or AC on stage (in some case on the audience too) during rehearsal and show. They can compromise the visual effects that are essential to the quality of the show.

(More informations below p.3)

## **SOUND**

### PA System

The sound system must be of professional quality and **suitable for electronic music concerts** (D&B, L-Acoustics, NEXO) with full sound spectrum coverage from 20Hz to 20kHz throughout the venue.

A minimum of **two 18-inch subwoofers** are required and must be set up in **stereo**.

The system must be correctly configured and the sound must be uniform throughout the venue. Everything must be operational upon our arrival.

**Two monitors** must be installed at the far end of the stage (upstage and downstage) on stands.

### Sound desk

We need a **professional numeric sound desk** (like Midas M32R, Allen&Heath QU24,...) must be made available and accessible to our control room installed in the audience.

We need **5 XLR input** :

- Stereo output from musician sound desk (XLR L/R)
- HF mic from the dancer (we provide Rode videomic go (Tx/Rx))
- Stereo external Reverb (provided) plugged in insert. Thanks to provide 4 XLR (2M+2F) to Jack 6,35mm)

### Intercoms

Please provide 2 wireless intercoms. One in the control room, one on stage.

## VIDEO

We need 2 **LED screens** pitch 4,8. The first one, **1m wide by 2m height** and the other one **1m wide by 1,5m height**. Please be sure to have the right number of bumpers, wiring and controllers (2 output minimum).

Depending on our means of transportation and if you have difficulty providing this equipment we can provide the kit (+300 €)

This screen move up and down during the show.

Please provide 2x50m RJ45 (or Ethercon) cat5e or cat6 and 4 clamps with 200kg WLL rings.

## RIGGING

For costumes effects, we provide 3 DMX winches Whalberg Winch 10.

For LED screen movements, we provide 2 x 250kg electric winches with 4 fall arrester, their wiring (**50m max between FOH and stage**). We need **4 rigging points 150 kg WLL at 8m height**. (sketch below). To hang the LED screens please provide **2 iron pipes 1m long, 4 clamps** with 200kg WLL rings, **4 pulleys suitable for iron cables**. (TBC)

For the security of all of this manipulations, we install on grid 4 IR cameras with monitor at the FOH.

We place a neon ceiling angle upstage/downstage.

Please provide **5x6m long 50mm diam aluminum pipe**. Depending on your type of grid (fix pipes, moving pipes, truss, etc) we can need **10x 20m ropes 8mm diam, 10 pulleys**. We will confirm you this point at the studies of your venue's plot.

For this show, please provide heavy fog machine **Glaciator JEM X-Stream** with 5l minimum of JEM Low fog High Density. ([https://www.thomann.fr/jem\\_low\\_fog\\_5l\\_high\\_density.htm](https://www.thomann.fr/jem_low_fog_5l_high_density.htm)).

Depending on our means of transportation and if you have difficulty providing this equipment we can provide it (+300 €).

## LIGHT

We provide :

- 15 fluorescent 1,5m modules with DMX to 0/10v converter
- 1 light computer with D::Light, SaCN Node and midi controllers

Please provide :

- 4 profile like **RJ 614 SX**
- 4 Floor mount (like H)
- 5 1kw **Cyc** like ADB AC1001 (4 minimum + 1 1kw halogen quartz or dmx controllable work lights)
- 3 1kw **PC** like ADB C101
- 3 250w electric loads for the fluos (PC/ heater/...)

- DMX kit 3&5 pin for all the setup + 3to5pin adaptors
- Power wiring kit

Gels to provide

Nombre	Ref	format
4	Lee 200 ( or 711 TBC)	profile 1kw
2	Lee 201	PC 1kw
1	Lee 200	PC 1kw
1	Lee 711	PC 1kw
3	Rosco 119	PC 1kw

**CONTROL ROOM**

Sound was mixed on **LIVE** at he control room, video interact with it and the sound on stage. **All the control room (video, sound, light, machinery) must be in the audience area.** Space must be big enough to have all of our stuff in the same place (**3m linear minimum**).

Please provide goose neck lights for each posts (3 minimum) and several power sockets (15 minimum).

Our strands (LED screen, winch commands, cameras) define maximum length between stage and FOH. **50m maximum.**

We are autonomous about light desk (SaCN to DMX node (5pin output)), video and machinery. About sound desk we will work on your one, it must be at our control room.

**DRESSING ROOMS**

We need dressing rooms for all the crew on tour with one separate for the dancer ( 2 minimum).

They must be comfortable enough with one table, chair, mirror, toilets and a shower.

Some food is very appreciated, ( fruits, biscuits, tea, coffee, chocolate, local cheese, local meat...).

**TECHNICAL RECEPTION CONDITIONS**

Please provide **a free and secured car park** for a 14m<sup>3</sup> truck (like Peugeot boxer L1H2) (H:2,75m mini) **near venue's unloading dock.**

About light and stage clearing, our tech crew will arrive at D-1 to make assembly and focus this the local crew.

**Stage and grid must be totally empty before our arrival.**

All the technical gear must be on place before our arrival.

PA System, must be setup before our arrival.

Our tech crew (2 persons) will arrived at D-2 in the evening to unload and start assembly at D-1 in the morning.

We need **3 shift at D-1** and **3 to 4 shift at D0**. They contain assembly, focus, rehearsals, show, disassembly and loadin.

**LOCAL CREW :**

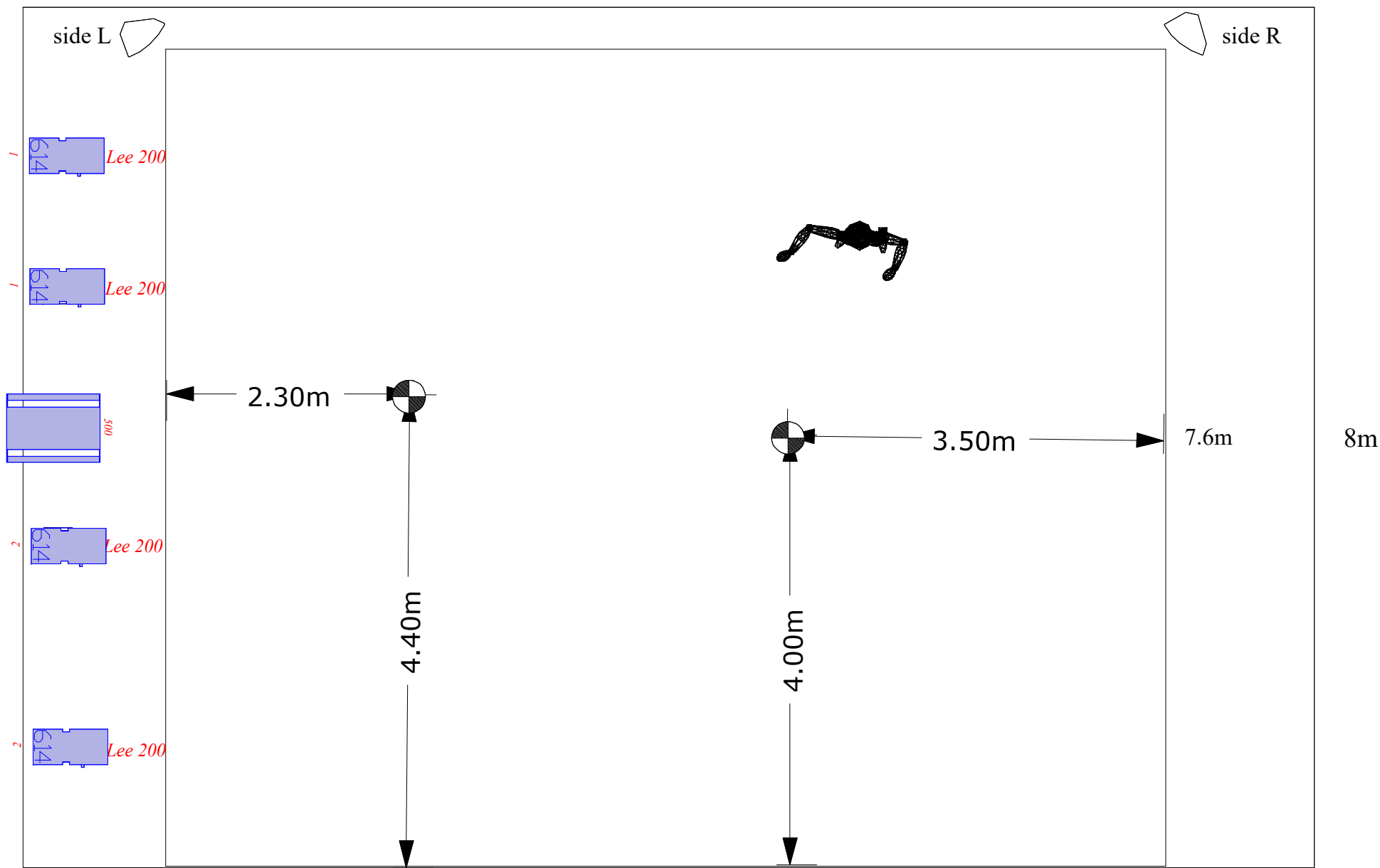
We need 3 persons minimum : **1 light tech, 1 rigg tech ( or stage tech), 1 sound tech** (this one must know PA system and venue's sound desk).

That's it ! Thanks for all and impatient to work (or re-work) with you !

Cie D'autres Cordes - HUNGER-  
Floor plot

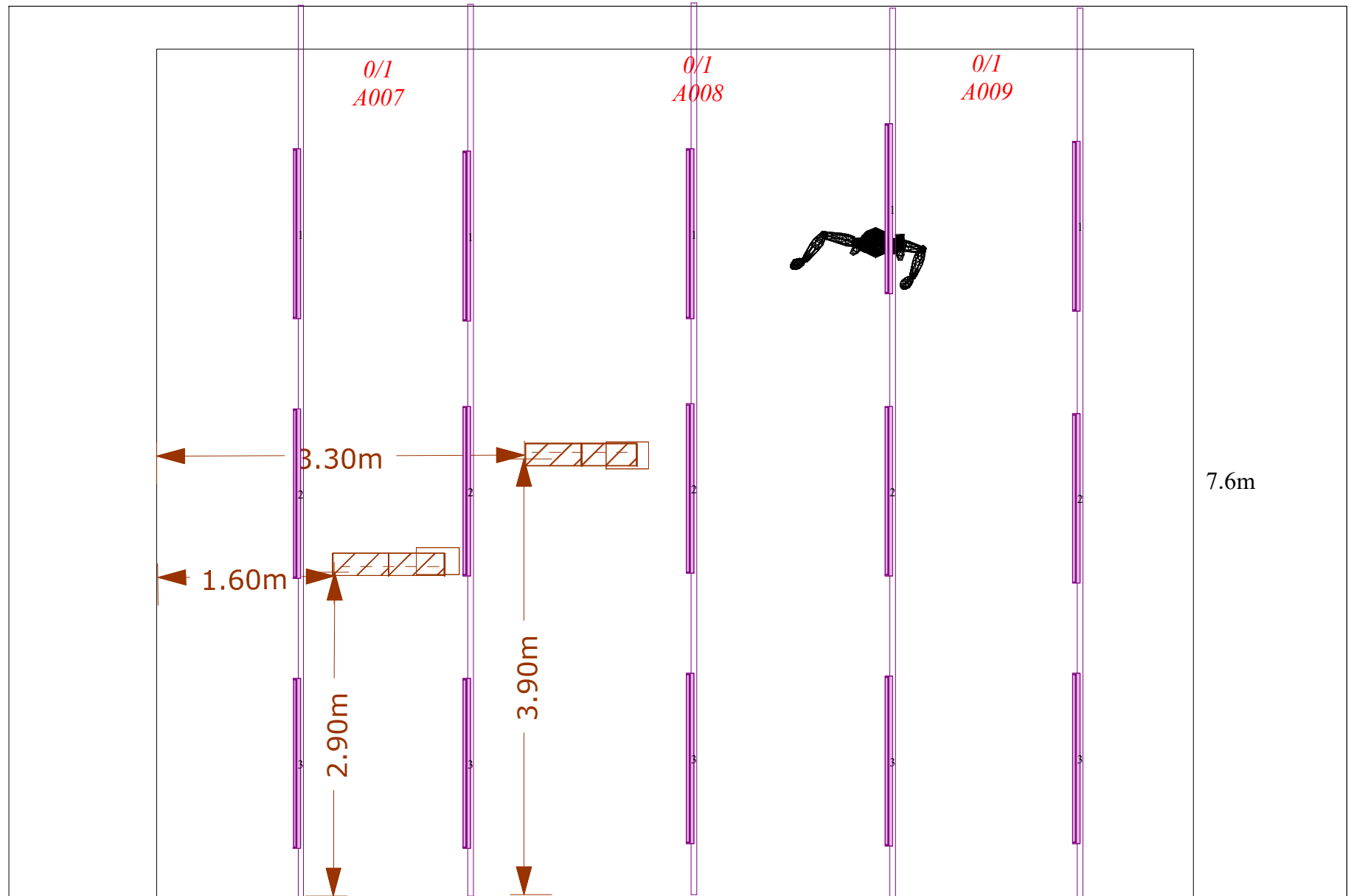
MàJ 25/07/25

12m



*D::light*  
RS 0/1 A201  
0/10v A202

0/10v L2 A402      0/10v L3 A403      0/10v L4 A404      0/10v L5/6 A405      0/10v L7/8 A406



LED Screen  
1.5x1m

LED Screen  
2x1m

0.00m  
0.20m  
0.40m  
0.60m  
0.80m  
1.00m  
1.20m  
1.40m  
1.60m  
1.80m  
2.00m  
2.20m  
2.40m  
2.60m  
2.80m  
3.00m  
3.20m  
3.40m  
3.60m  
3.80m  
4.00m  
4.20m  
4.40m  
4.60m  
4.80m  
5.00m  
5.20m  
5.40m  
5.60m  
5.80m  
6.00m  
6.20m  
6.40m  
6.60m  
6.80m  
7.00m  
7.20m  
7.40m  
7.60m  
7.80m  
8.00m  
8.20m  
8.40m  
8.60m  
8.80m  
9.00m  
9.20m  
9.30m

9.3m

7.6m

8m

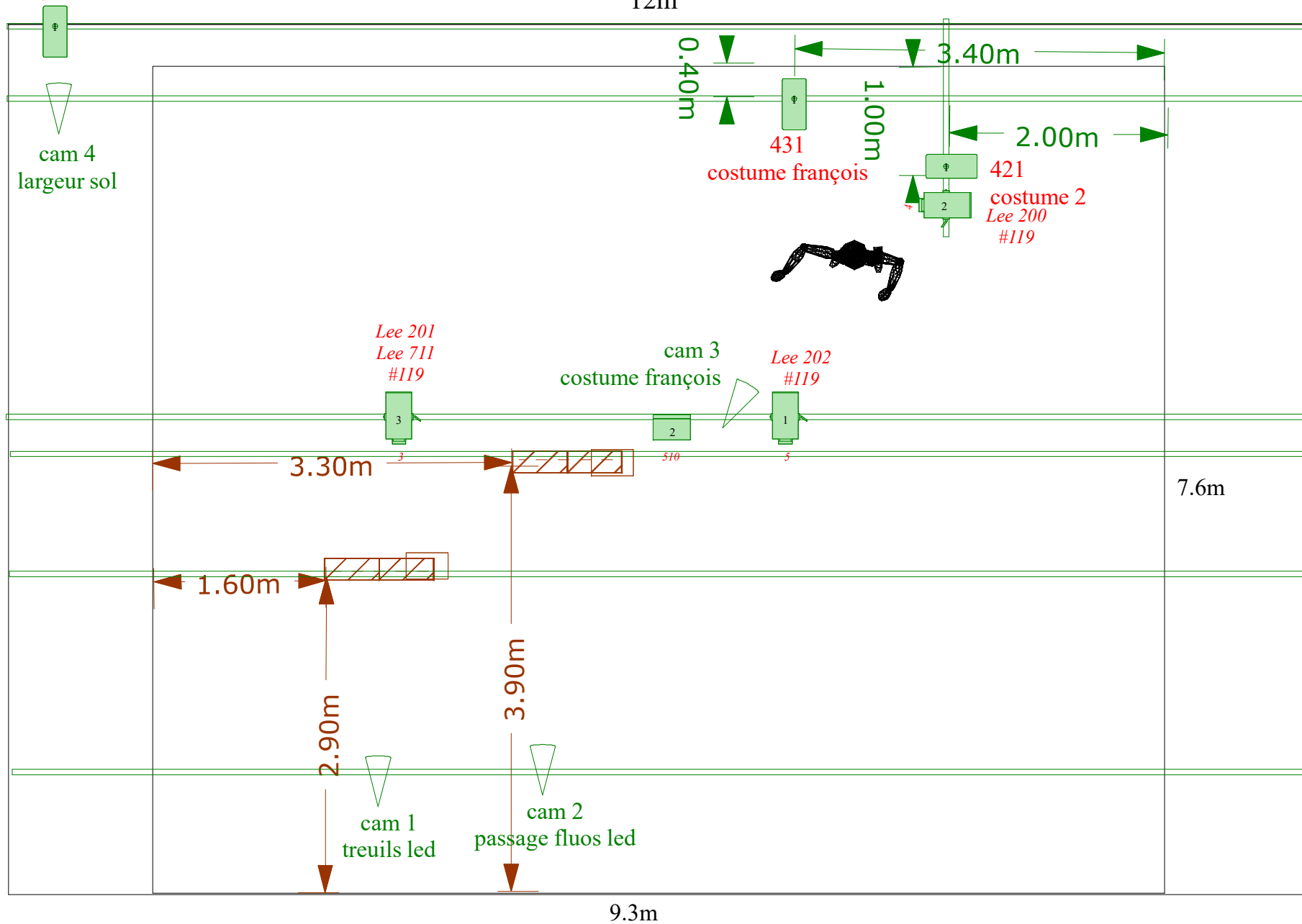
# Cie D'autres Cordes - HUNGER-

Grill plot

MàJ 25/07/25

451  
largeur sol

12m



8m

12

12

12

12

