

TECHNICAL RIDER

« FLESH » Franck Vigroux

Update April 2021

Technical manager : Julien Paulhiac 0033(0) 6.08.75.84.54
paulhiacjulien@gmail.com

Transport :

Our Driver will arrive with one small truck and a trailer with a part of technical staff (14m 3), please provide for it a free parking area.

Important :

We use a lot of heavy smoke, remember to disable all smoke detectors and, if necessary, the fire alarm system to, in all areas that the smoke can reach (corridors, etc ...) It would be so deep disappointment to stop the performance because of alarm starting.

The heating system and the ventilation system must be adjustable, or even totally deactivated according to technical needs, it's can be essential to obtain our correct smoke effect.

We hang on your pipes 4 Citroën 2CV engines with 4 electric motors for a single load of 70dN maximum (see plans).

Please get your attention to getting the better quality of darkness you can during lightless (a real black atmosphere is needed on the stage as well as in the audience), watch out for all small lights, they can have a bad impact on the quality of the performance.

Video settings must be made by the technical team of the company using a "Genie" lift or a "Samia" scaffold tower. Driving permits will have to be issued by the management as well as quick training provided by competent staff.

Thanks to provide at least 2 room for staff rest and preparation (one for dancers and other for artistic and technical team) with little catering like coffee, tea, fruits etc...

Schedule and staff :

The equipment must be installed by qualified and trained staff.

Day	Time	Activity	Staff to provide	Comment
D-2	9h00-12h00 14h00-18h00	Load in Rigging for all truss structure	4 Stage technician	
D-1	9h00-13h00	Light rigging Engines rigging	1 Video technician 2 Light technician 2 Stage technician	
D-1	13h00-14h00	Lunch		
D-1	14h00-18h00	Stage, marley Rigging Light focus	1 Video technician 2 Light technician 2 Stage technician	
D-1	18h00-20h00	Video focus	1 Video technician 1 Stage technician	
D	9h00-13h00	Finitions Sound check with vidéo Stage check by dancers	1 Stage technician 1 Light technician 1 Sound technician	
D	13h00-14h00	Lunch		
D	14h00-18h30	Technical rehearsal Last technical setup Stage setting Stage cleaning	1 Stage technician 1 Sound technician	
D	18h30-20h00	Lunch		
D	20h15-20h30	Public entrance		
D	20h30-21h30	Performance	1 Stage technician 1 Sound technician 1 Light technician	
D	22h00-2h00	Load out Get out	6 Technicians	

Equipment to be provided by the venue :

Aluminium truss (see plans)

One grid made with square truss 300 Prolyte type H30 or equivalent composed of the following elements:

- 2 truss 1m
- 3 truss 2m
- 4 truss 2,5m (or 4 truss 2m and 4 truss 0,5m)
- 6 truss 3m



- 4 angles jonction 90°



- 2 T jonctions 3 directions



- 4 Chain motor 500kg (mini) BGV-D8 or equivalent



Light

- 8 zoom profiles Robert Juliat 614 SX or equivalent
- 8 Iris for the zoom profiles 614 SX
- 4 cyc light (1000W)



- 24 DMX 3kw dimmers with 8 static relay + 8 electrical loads (500w mini)
- 20 DMX cables (Five points) 10m and 15m.



- 1 DMX Splitter 6 channels



- 1 Electric 16A snake (with male and female plugs) 8 channels 20m with **European electric plug**



- 20 Electric 16A wires 10m and 15m with European electric plug



- **1 power supply P17 32A mono on stage for the Glaciator**



Stage dressing

- 1 white marley (Dance Floor) in perfect condition and perfectly clean (9m x 10m minimum), please make them going from front stage to back stage and centered in between left and right stage.
- If you get a proscenium, thanks to provide a matte black carpet to avoid reflections of light in front of our black net screen.
- The stage, for get the best black atmosphere (during lightless) will be finished as a perfect black box by using borders, legs etc ...

Rigging and fixtures

- 4 electric chain hoists 1T ou 500kg for the grid + remote + slings + shackels + power supplie.
- 20 10kg iron bricks.



- 1 Clothes rack.



Video and light Settings

We need a "Genie" lift or a "Samia" scaffold tower.



Sound

PA system

One Balanced and homogeneous sound system covering the entire audience like NEXO PS15, L.ACOUSTICS MTD115, d&b Q7 or Line Array... on L/R output.

2 Subs (R/L) of **18'' minimum**.

FOH desk

- 1 Yamaha 01v96 or DM1000 minimum.
- 3 dimmed desk lamps.
- 4 UHF intercoms (one at the control room and the orders on stage)

Control room:

The control room will be installed in the audience room less than 45m from the stage to allow a comfortable view of the stage because of many live-action between sound and dancers and video and dancer too.

We need tables for get 4m x 1m working place, allowing comfortable seating for 4 people.

What we bring :

Light

- 1 USB/DMX ENTTEC dongle + Korg NanoKontrol
- 1 MacBook-Pro with « Dlight » software.
- 1 Artnet/DMX box
- 1 RJ45 Cat 5e 50m
- 20 fluorescent tubes
- PAR Zoom COB RGBW 120W

Set dressing

- 3 black borders 0,8m x 9m
- 3 White video screens 8m x 6m
- 1 White reflector screen 9m x 6m
- 1 Black net screen (Gobelin tulle) 9m x 6m
- 24m of 20mm tube

Accessories

- 4 Citroën 2CV engines
- 4 mini electric cable motor (winch) for 2CV engines
- 4 remotes with 50m cable
- 4 Anti fall cable
- 20 double pipe clamp

Video

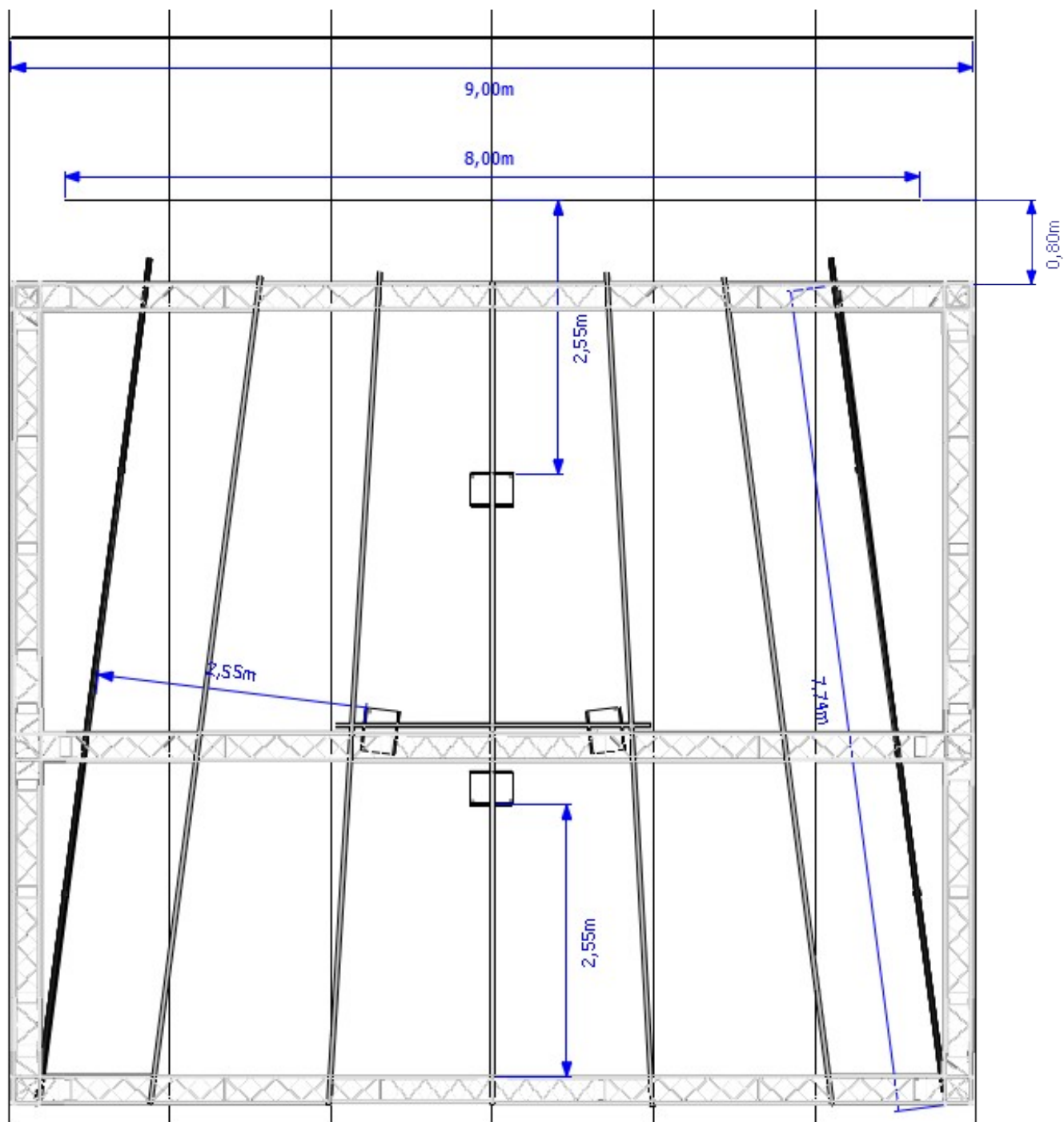
- 4 Benq 0.30 Fisheyes/mirror videoprojectors
- 4 HDMI/SDI video transmitter
- 4 Coaxial cable 50m
- 1 video control system
- 1 MacBook-pro with « Isadora » software

Sound

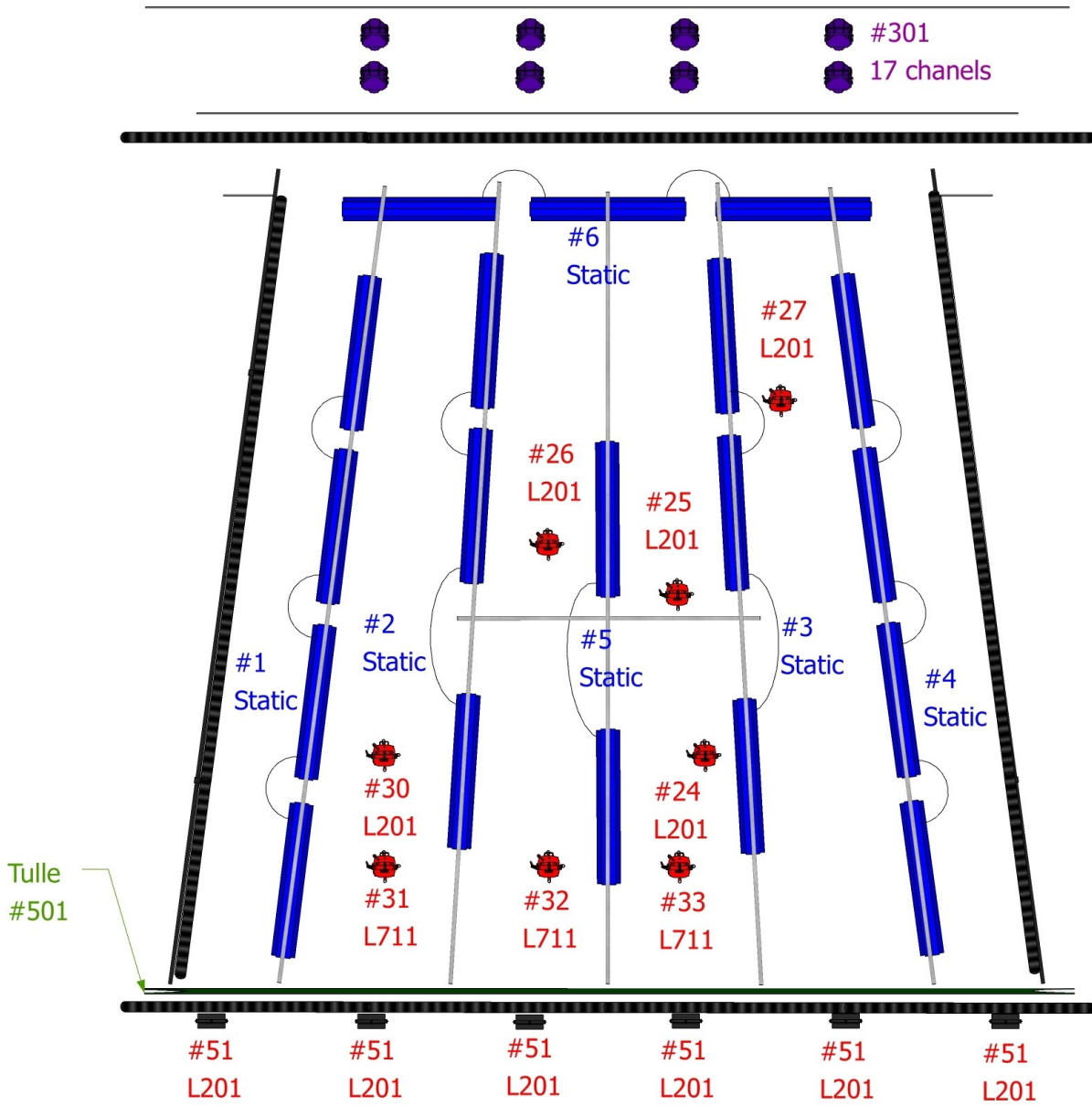
All the electronic instruments





Layouts:

Video projector and screen plots

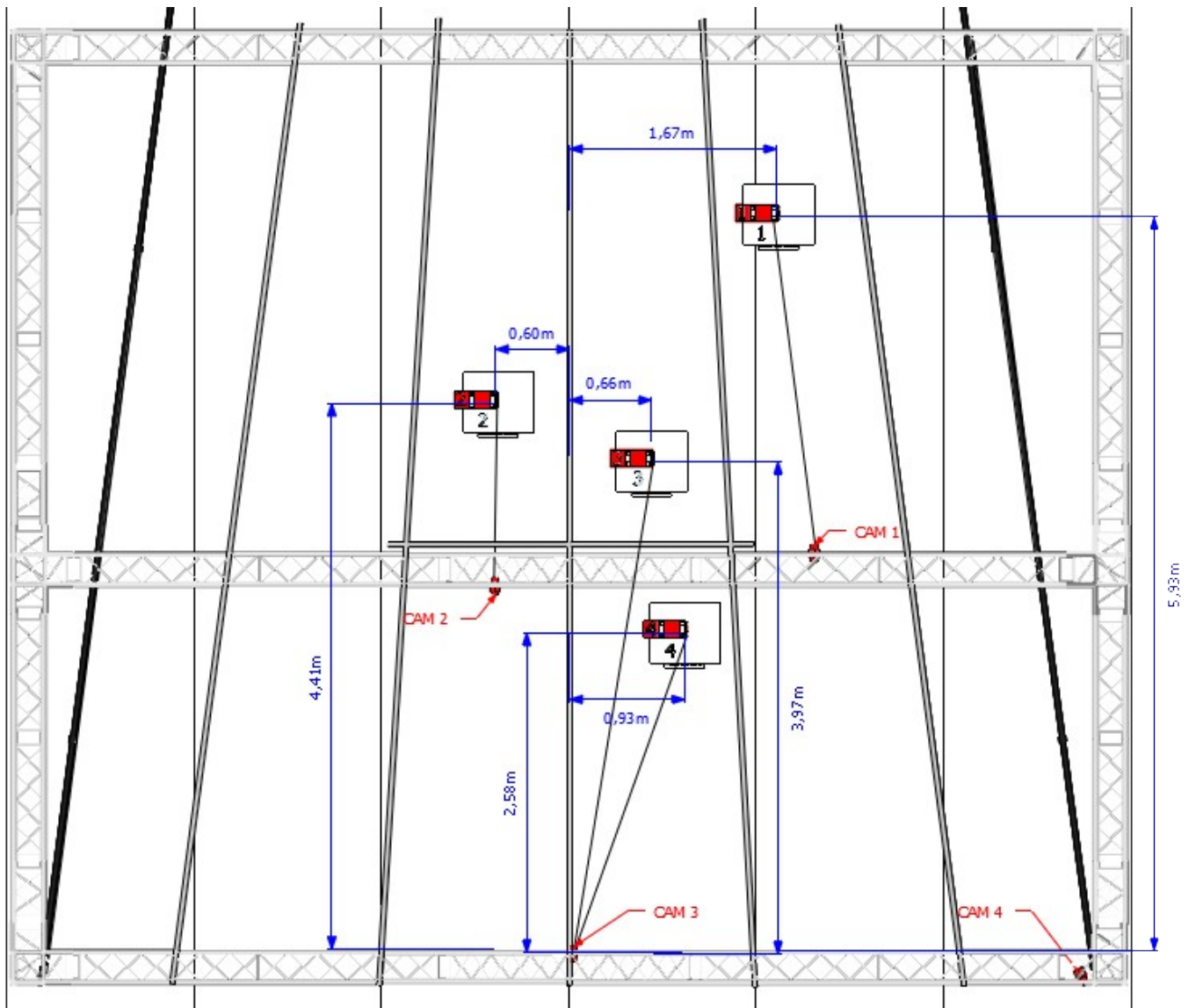


Light plots

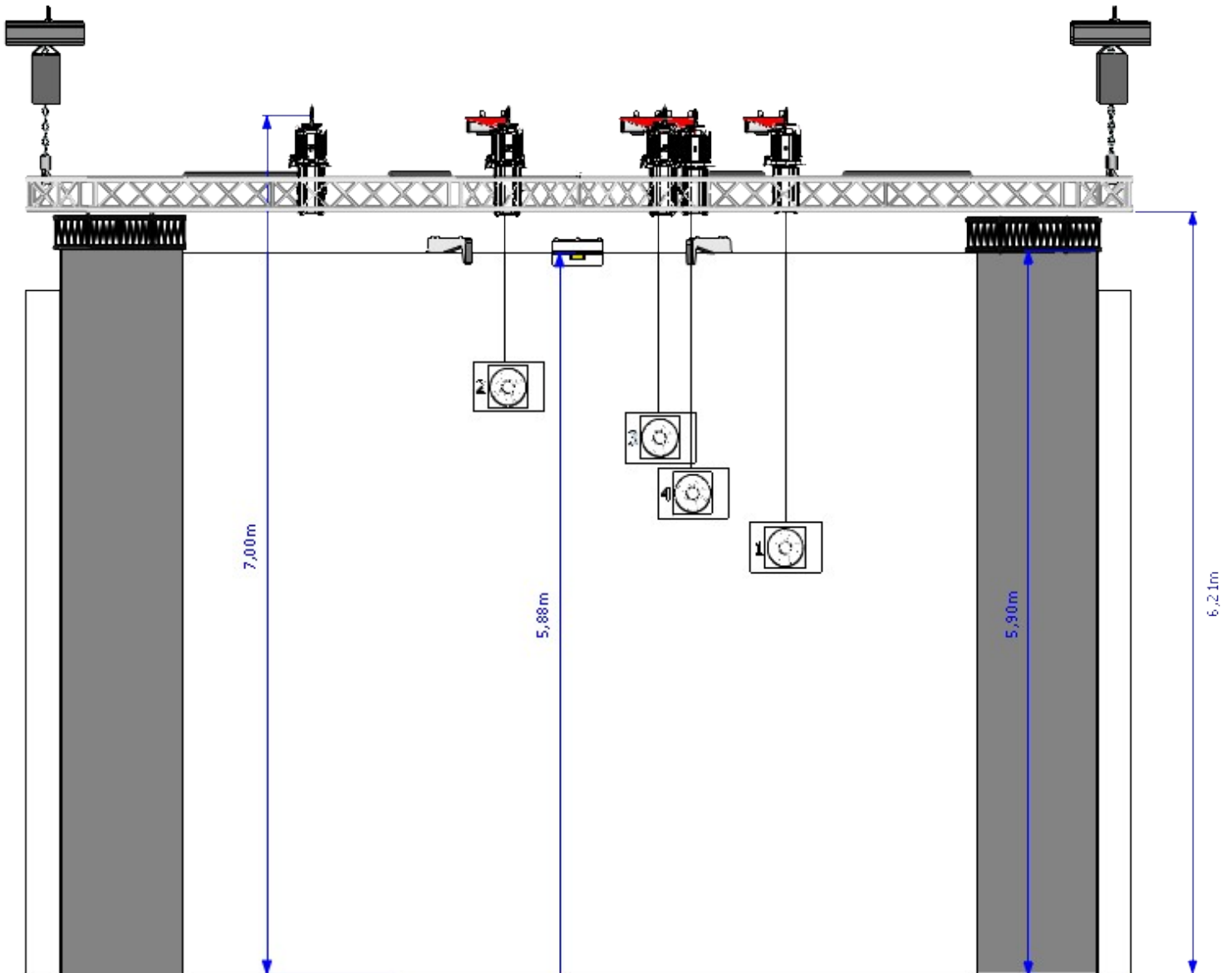


KEY	
	Fluos X19 (Provided by us)
	LED COB Zenit X12 (Provided by us)
	Profile 614+iris X8
	Cyc 1000w X6

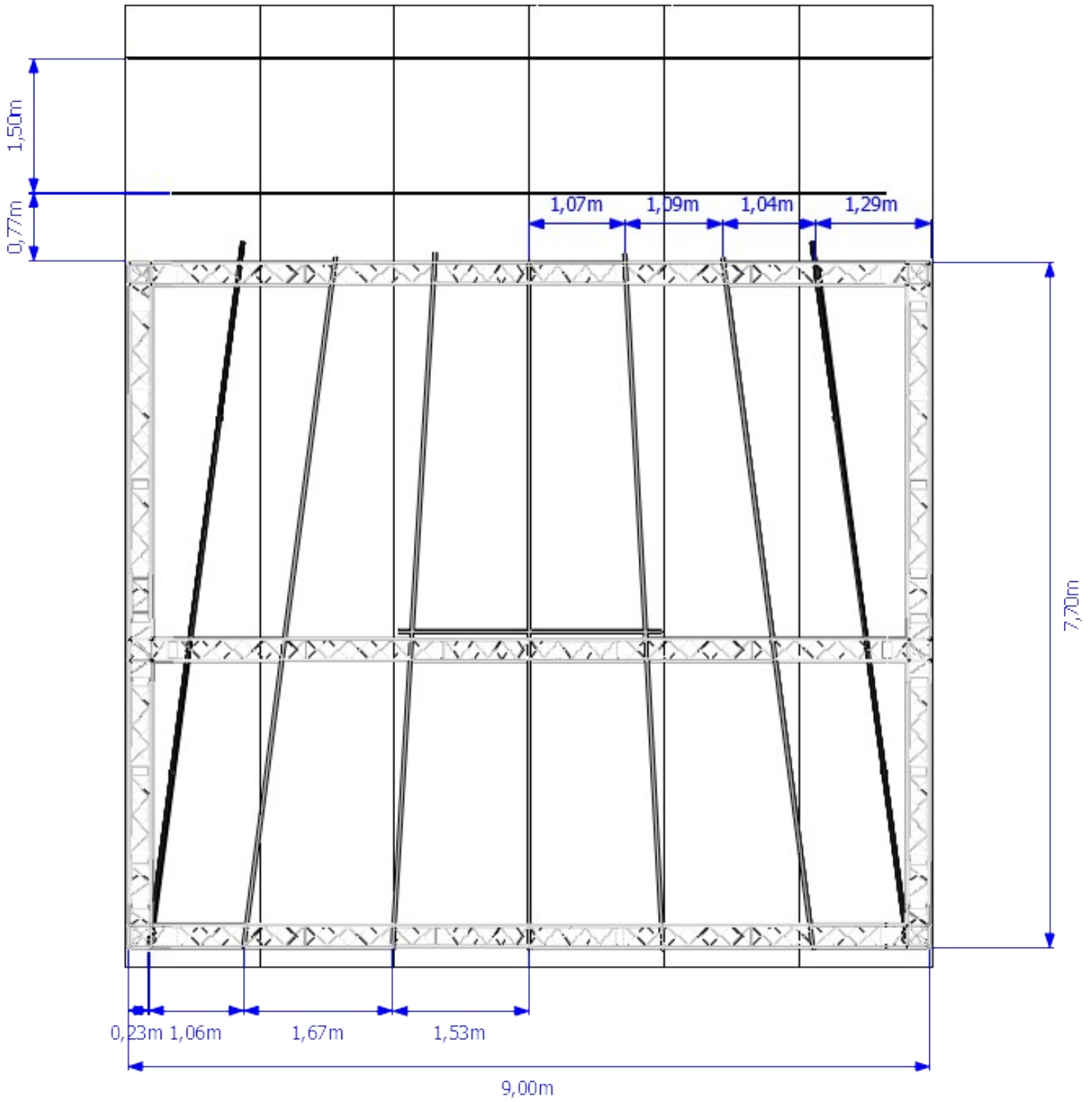
Electric motors + 2CV Citroën engine plots

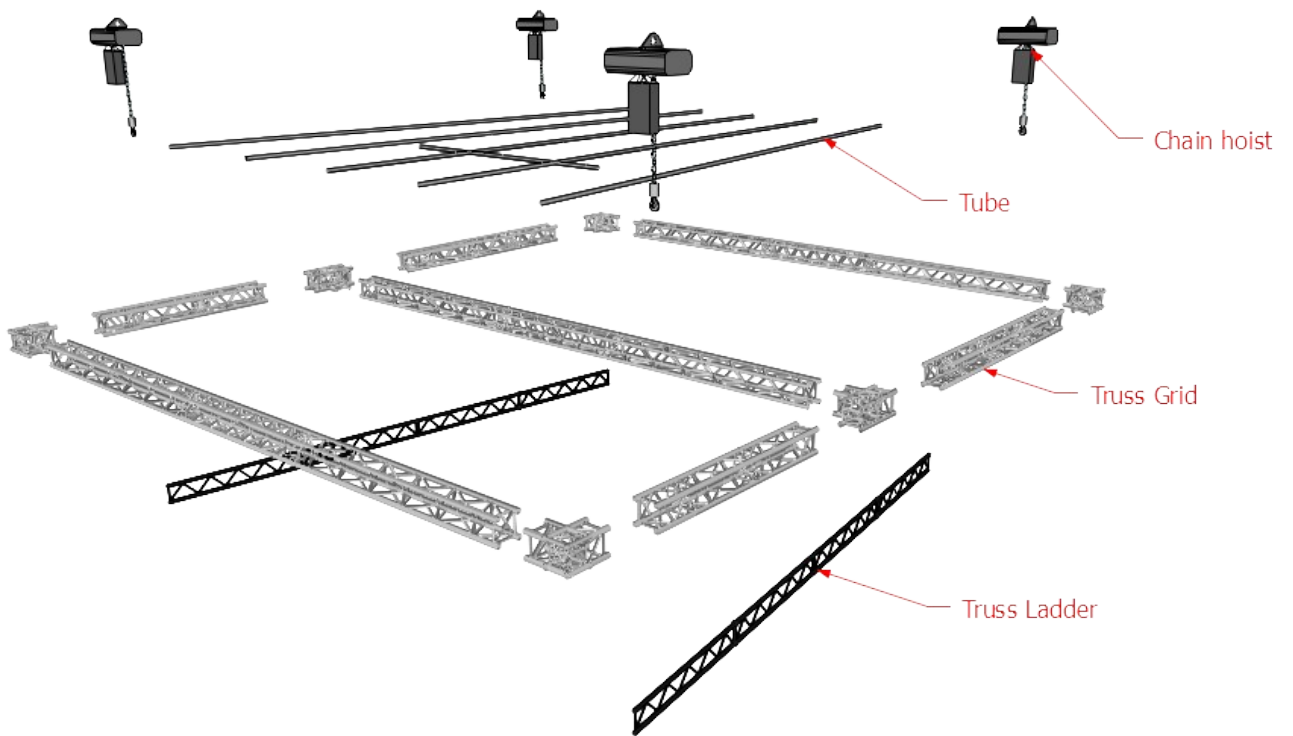
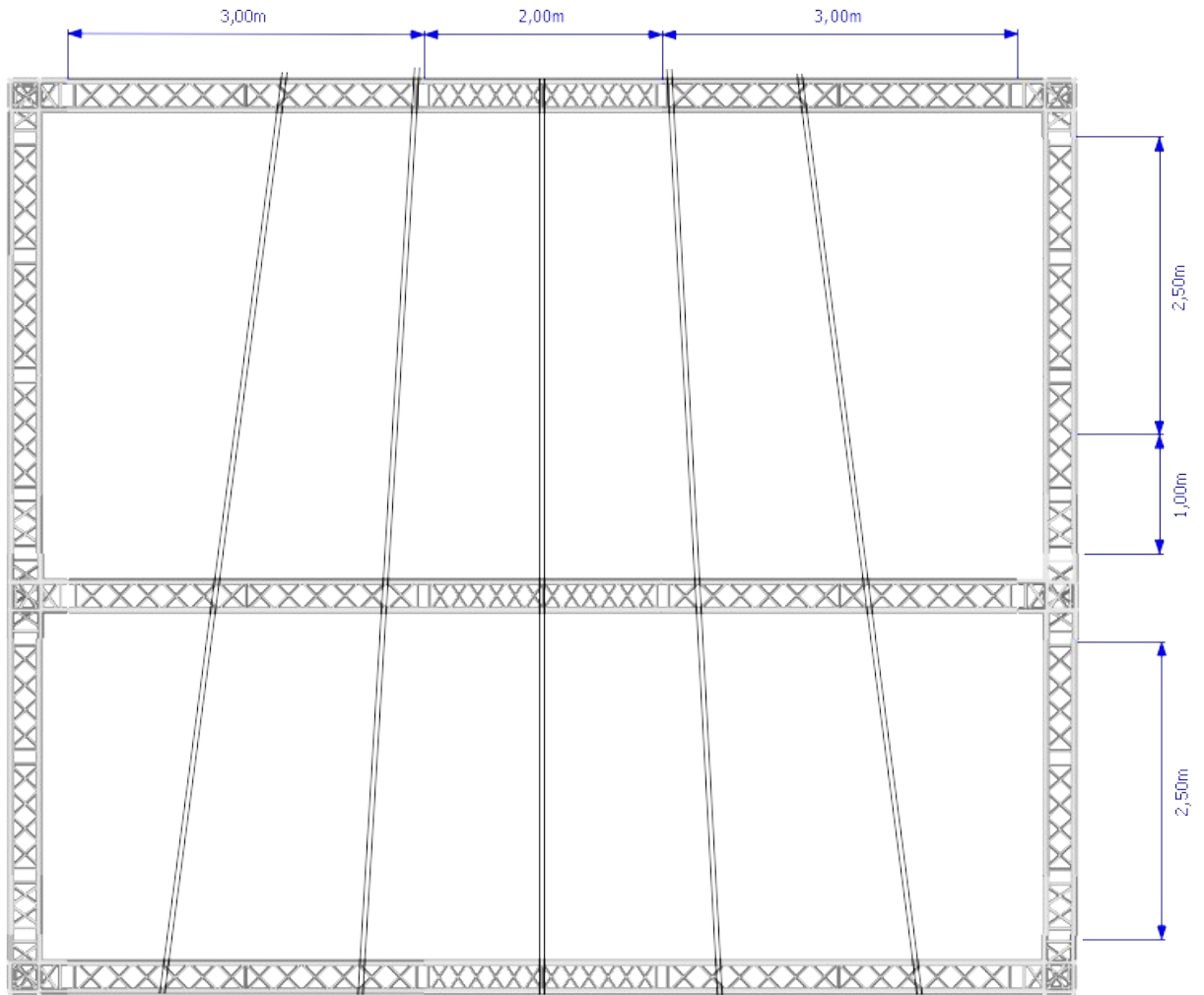


Front élévation plots

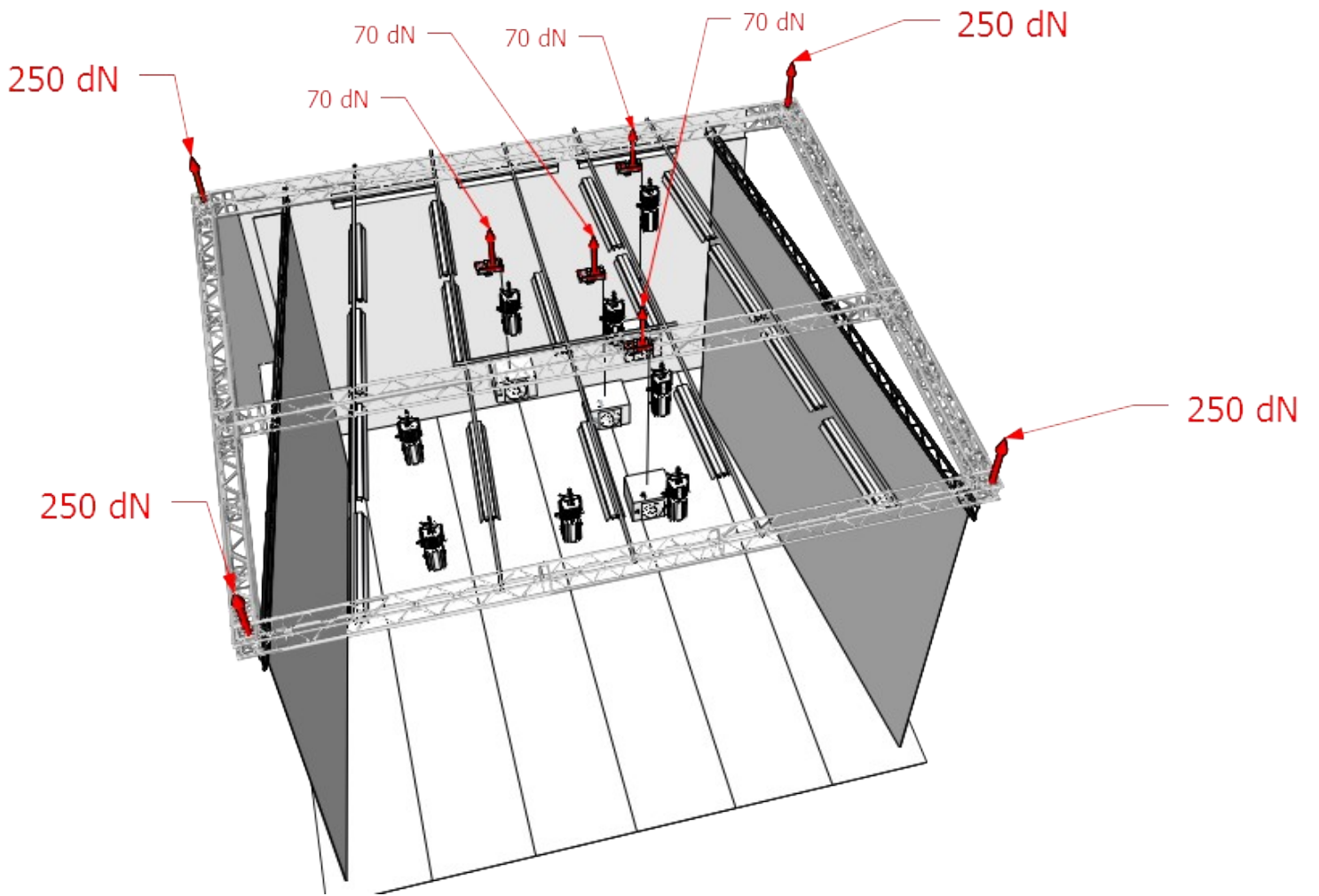


Truss and grid plots





Truss grid load



Light patch DMX + Artnet

Lignes gradateurs à fournir



Fourni par la compagnie



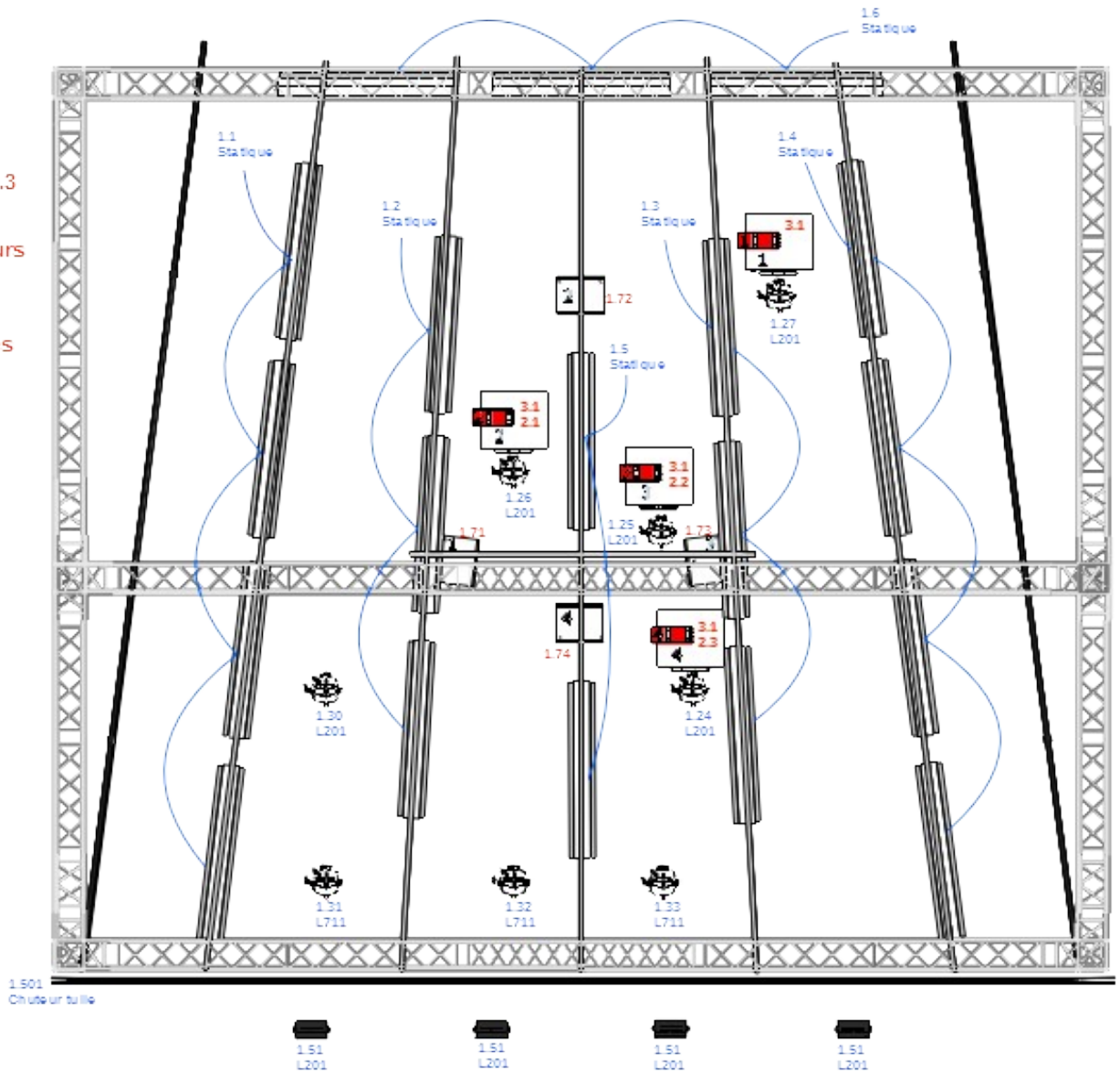
19 Fluos
1.401 à 1.407

5 renards
3.2/3.3/4.1/4.2/4.3
Dlight 1/2/3/4/5

3 hélices moteurs
3.1
Dlight 6

3 électro-vannes
2.1/2.2/2.3
Dlight 7/8/9

12 LED COB
1.301
17 chanel
Dlight 101



Photos

